



'BUILT TOUGH, PROVEN TOUGH'



SMART TANK
33,000L

SPEC SHEET

SMART TANK

ST033 33,000L Self Bunded

Size	Safe Fill (L)	Weight (kg)	Length (mm)	Width (mm)	Height (mm)
33,000L	32,000L	7800	6900	2400	2700

Standard Features:

- Designed and manufactured in Australia to Australian Standards
- Self bunded (double wall)
- Manway for access to inner tank
- Fork Lift Pockets and Under tank visibility for visual inspection
- 3" Bulk fill point with Overfill protection valve and alarm.
- Fold Out Access Ladder and Safety Access Platform to Spillbox and Manway Access.
- 4 Lift points for easy moving and transportation (whilst Empty only)
- Calibrated dipstick with safe fill level, located in a Lockable Spill Box
- Domed roof to stop water/dirt pooling
- Safety signage for Australian regulations
- Lockable Pump bay with container style doors and locks.

Optional Pumps:

- 240v Pump
- Diesel or Petrol Driven Pumps
- Ebsray Pumps
- Regent Pumps

Have a pump you want? let the team know

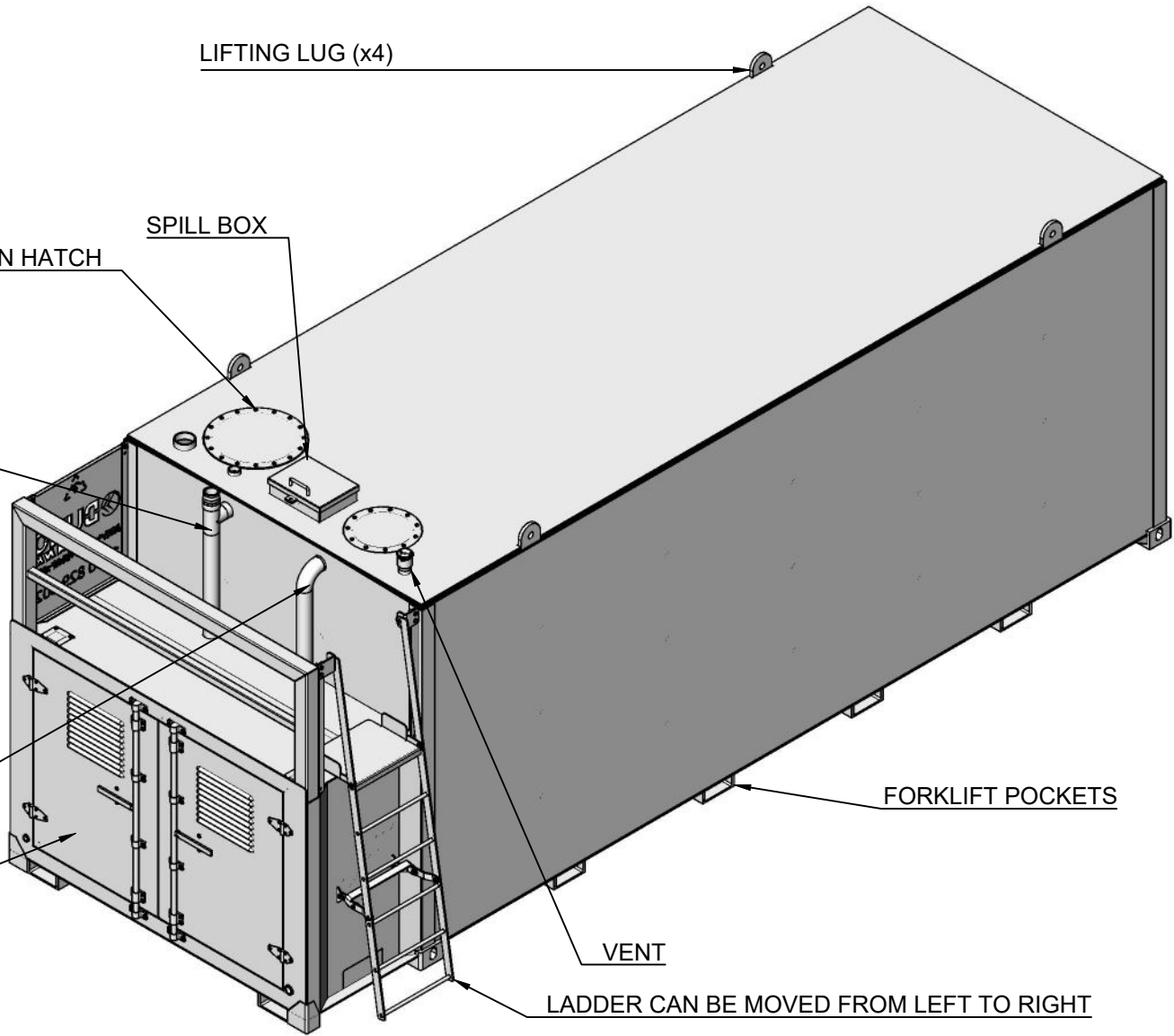
Optional Accessories:

- 10m, 20m or 30m Heavy Duty Retractable Hose Reel
- 1-10m Loose Hose
- Emergency Stop, Battery Isolator and Reflective Mine Tape
- High Mast Assembly
- LED Light Kits
- Fuel Management Systems
- Reconnectable Breakaway Coupling
- Ocio Tank Level Gauge
- Spill Kits & Fire Extinguishers
- 250T Drive Over Spill Grate
- Credit Card Reader (24/7 public sites)
- Auto Shutoff Nozzle
- Wiggins Nozzle



ENGINEERING SPECIFICATIONS:

1. MATERIAL SPECIFICATION
 - FLAT: GRADE 300+ AS/NZS 3679.1
 - PLATE/ SHEET: GRADE 250 AS 3678
 - PFC: GRADE 300+ AS/NZS 3679.1
 - R/BAR: GRADE 300+ AS/NZS 3679.1
 - ALL FLANGES ANSI 150
 - ALL VALVES FIRE SAFE CARBON STEEL
 2. DESIGN COMPLIANCE
 - ADG CODE 7th EDITION
 - AS1940-2004: STORAGE AND HANDLING OF FLAMMABLE AND COMBUSTIBLE LIQUIDS
 - AS1692-2006: STEEL TANK FOR FLAMMABLE AND COMBUSTIBLE LIQUIDS
 - DIMENSIONAL AND MATERIAL SPECIFICATIONS WITHIN FOLLOWING DRAWINGS
- SET NEED TO BE MAINTAINED AND TO MEET COMPLIANCE



SAFE FILL LEVEL: 32,000L

TARE WEIGHT: 7,900KG

LOADED WEIGHT: 34,520KG (WEIGHT DOES NOT INCLUDE PUMP & HOSES ETC)

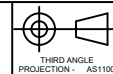
GENERAL NOTES

- ALL DIMENSIONS ARE IN MILLIMETERS (mm) U.N.O
- GENERAL TOLERANCE U.N.O
 - X ± 0.5
 - XX ± 0.1
 - XXX ± 0.05
 - Angular ± 0.25°
- REMOVE ALL SHARP EDGES AND BURRS
- PAINTING MANUFACTURER IN ACCORDANCE
- MATERIAL GR250

REV	DATE	DETAILS	BY/APPD
A			
REVISION HISTORY			



114-116 Canada St, Lake Cargelligo NSW 2672
 Phone: 1300 829 802
 Fax: 1300 259 659



THIRD ANGLE
 PROJECTION - AS1100

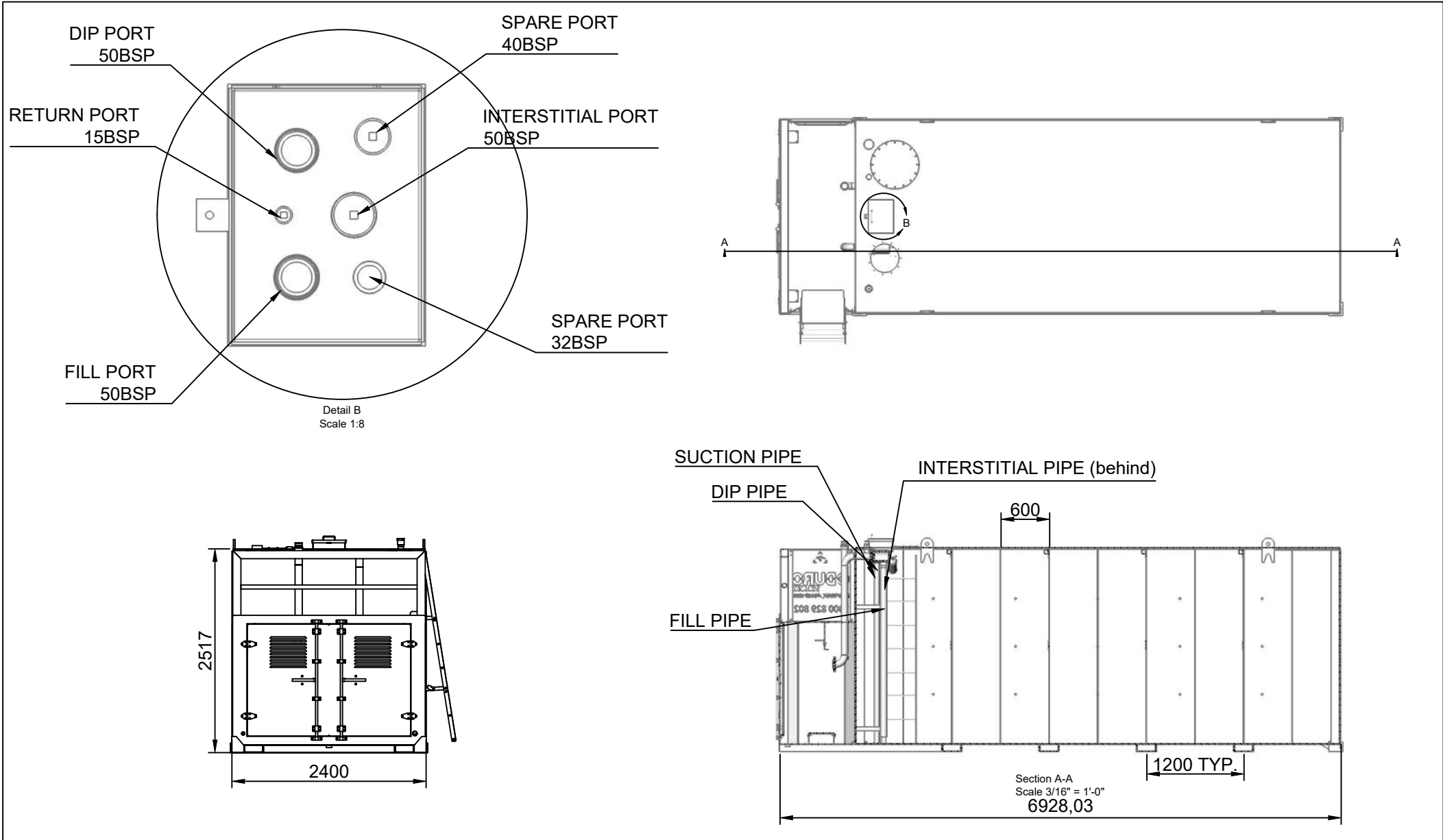


STANDARD FINISH
 SURFACE

CHK: DATE: 00/00/2018
 DRN: MWH DATE: 08.03.2019

TITLE		OVERVIEW	
SHEET NO:	A4	DWG NO:	ST033
DO NOT SCALE U.N.O		PAGE 01 OF 02	

MASS: N/A



GENERAL NOTES

- ALL DIMENSIONS ARE IN MILLIMETERS (mm) U.N.O
- GENERAL TOLERANCE U.N.O
 - X ± 0.5
 - XX ± 0.1
 - XXX ± 0.05
 - Angular ± 0.25°
- REMOVE ALL SHARP EDGES AND BURRS
- PAINTING MANUFACTURER IN ACCORDANCE
- MATERIAL GR250

MASS: N/A

REV	DATE	DETAILS	BY/APPD
A			
REVISION HISTORY			

DURO TANK
DURABILITY BUILT TO LAST

114-116 Canada St, Lake Cargelligo NSW 2672
Phone: 1300 829 802
Fax: 1300 259 659

THIRD ANGLE PROJECTION - AS1100

STANDARD FINISH SURFACE

1.6

CHK: DRN: MWH

DATE: 00/00/2018

DATE: 08.03.2019

TITLE

LAYOUTS

SHEET NO:	ST033
A4	
DO NOT SCALE U.N.O	PAGE 02 OF 02